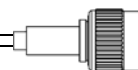




TNC/TNC 18 series

RI43-RI44





	PAGE
TNC SERIES	
General	4
Interface.....	5
Characteristics.....	6-7
TNC 50 Ω SERIES	
Plugs.....	8-9
Jacks	10-11
Jacks and receptacles.....	12
Receptacles.....	13-14
Adapters	15
Caps	16
TNC 75 Ω SERIES	
Plugs.....	17
Jacks and adapters	18
TNC 18 GHz SERIES	
Characteristics.....	19
Plugs and jacks	20
Jacks	21
Receptacles.....	22
Adapters and cap	23
Panel drilling.....	24
Assembly instructions.....	25-38



50 Ω	DC - 11 GHz standard DC - 18 GHz 18 GHz series
75 Ω	DC - 1.5 GHz DC - 1 GHz recommended
50 and 75 Ω	DC - 1.5 GHz commercial

GENERAL

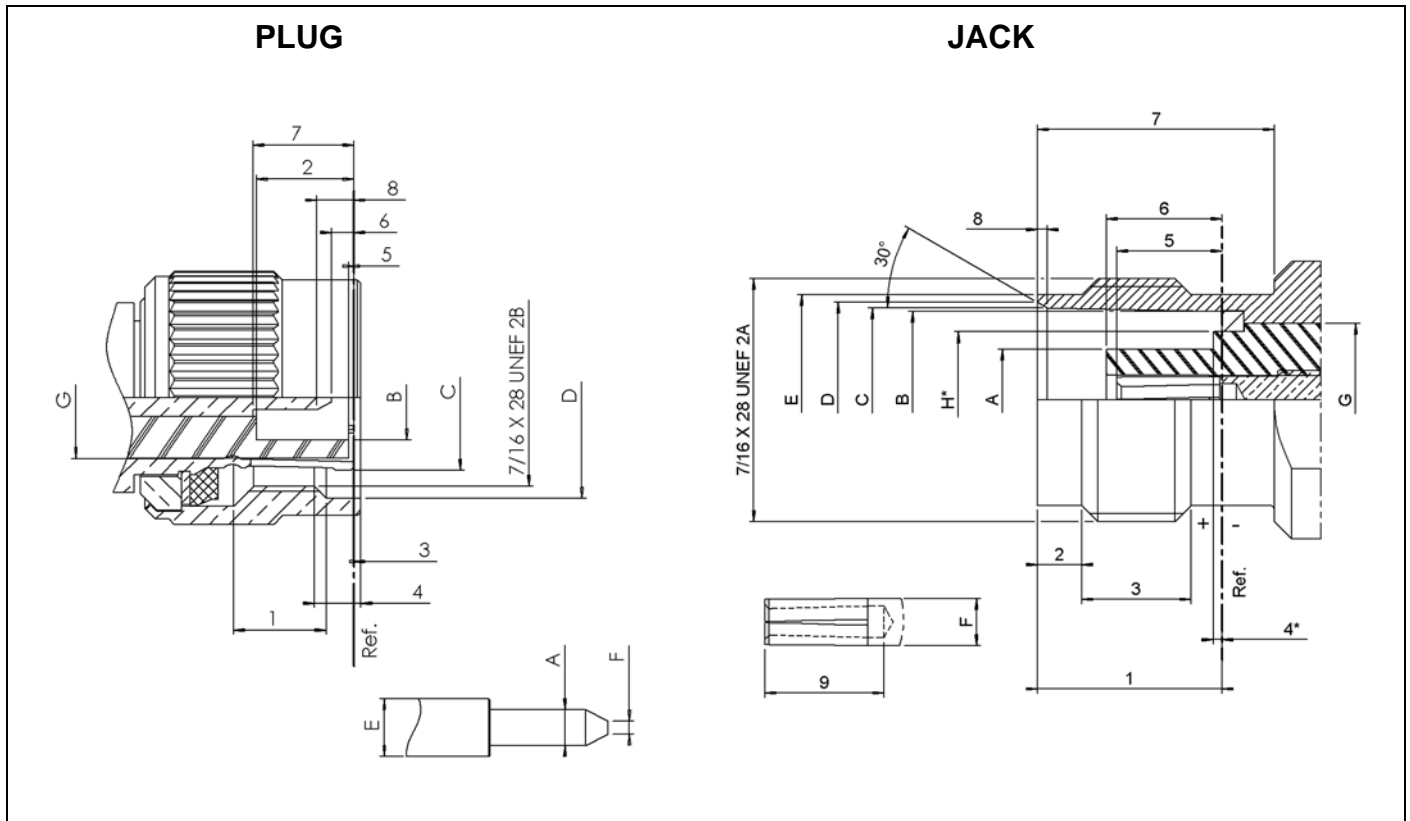
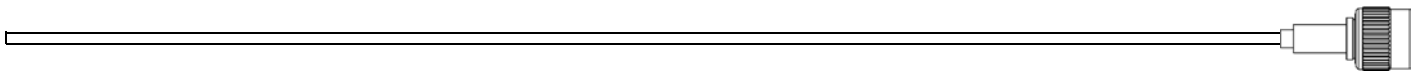
- Screw-on equivalent to BNC bayonet series
- Good RF performance
- Suitable for high power levels
- Long life and high strength
- 3 ranges:
 - Standard TNC series (50 and 75 Ω fully interchangeable)
 - Commercial TNC series (50 and 75 Ω)
 - 18 GHz TNC series (50 Ω)

APPLICABLE STANDARDS

- MIL-C-39012 / MIL STD 348A/313
- IEC 60169-17
- CECC 22200

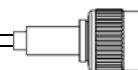
APPLICATIONS

- Avionics
- Aeronautics
- Countermeasures
- Telecommunications



LETTER	mm		inch	
	min.	max.	min.	max.
A	1.32	1.37	0.052	0.054
B	4.83	-	0.190	-
D	11.40	-	0.449	-
E	-	2.2	-	0.087
F	0.35	0.65	0.014	0.025
G	7	7.05	0.275	0.277
1	4.9	5.7	0.193	0.224
2	5.28	5.79	0.208	0.228
3	0.15	-	0.006	-
4	1.8	-	0.071	-
5	0.15	-	0.006	-
6	0.08	1.02	0.003	0.040
7	5.33	5.84	0.210	0.230
8	0.7	1.98	0.027	0.078

LETTER	mm		inch	
	min.	max.	min.	max.
A	-	4.72	-	0.186
B	8.1	8.1	0.319	0.321
C	8.31	8.46	0.327	0.333
D	8.79	9.04	0.346	0.356
E	9.6	9.68	0.378	0.381
F	-	2.2	-	0.087
H	-	5.9	-	0.232
1	8.3	8.5	0.327	0.335
2	1.73	2.24	0.068	0.088
3	4.75	-	0.187	-
4	-	0.15	-	0.006
5	4.72	5.23	0.186	0.206
6	4.78	5.28	0.188	0.208
7	10.7	-	0.421	-
8	0.38	0.76	0.015	0.030
9	4.95	-	0.195	-



STANDARD TNC

TEST/CHARACTERISTICS	MIL-C-39012 A	VALUES/REMARKS	
----------------------	---------------	----------------	--

ELECTRICAL CHARACTERISTICS

Impedance		50 Ω	75 Ω
Frequency range		DC - 11 GHz	DC - 1.5 GHz
V.S.W.R.	3-14	1.30 max	
Insertion loss	3-27	0.18 dB max at 9 GHz	
RF leakage	3-26	-60 dB min from 2 to 3 GHz	
Insulation resistance	3-11	5000 MΩ min	
Contact resistance	3-16	Initial	After proof
center contact (mΩ)		1.5	2
outer contact (mΩ)		0.2	-
Working voltage		At sea level: 500 V rms	at 70000 ft (21000 m): 125 V rms
Dielectric withstanding voltage	3-17	At sea level: 1500 V rms	at 70000 ft (21000 m): 375 V rms
RF withstanding voltage	3-23	At sea level: 1000 V rms (5 MHz sine wave)	

MECHANICAL CHARACTERISTICS

Durability	3-15	500 matings	
Mating / unmating		axial force: not applicable torque: 1.96 inch pounds (22.6 N.cm)	
Recommended mating torque		3.99 to 5.98 inch pounds (46 to 69 N.cm)	
Proof torque		14.74 inch pounds (170 N.cm)	
Coupling mechanism retention force	3-25	100 Lbf (44.5 daN)	
Cabling retention force	3-24	cable clamp:	40.6 Lbf (181 N min) (all cables)
		crimped:	51 Lbf (227 N min) (cable dia. .189 (4.8) to .228 (5.8))
			76.4 Lbf (340 N min) (cable dia. .250 (6.35) and above)
Center contact retention		Axial: 6.06 Lbf (27 N)	

ENVIRONMENTAL CHARACTERISTICS

Temperature range		-65°C / + 165°C	
standard models		-65°C / +100°C	
hermetic sealed models		-65°C / +105°C	
models for semi-rigid cables			
Thermal shock	3-20	MIL-STD-202, method 107, condition B	
High temperature endurance		MIL-STD-202, method 108	
Corrosion (salt spray)	3-13	MIL-STD-202, method 101, condition B	
Vibrations	3-18	MIL-STD-202, method 204, condition B	
Shocks	3-19	MIL-STD-202, method 213, condition G	
Moisture resistance	3-21	MIL-STD-202, method 106	
Low pressure	3-22	Not applicable	
Hermetic seal		Applied vacuum 10 ⁻⁶ mm of Hg (Torrs) leakage rate < 10 ⁻⁶ atm/cm ³ /s	
Leakage		Pressure 3.5 bars; duration 2 mn; temperature 15°C to 25°C	

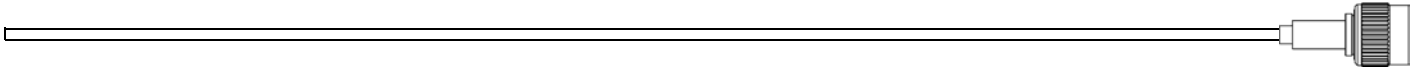
MATERIALS

Body and center pin contact		Brass as per QQ-B-626
Center socket contact		Beryllium copper as per QQ-C-530
Ferrules		Brass
Insulators		PTFE teflon
Gaskets		Silicone elastomer

PLATING

Body		Nickel plated
Center contacts		Gold plated

All dimensions are given in mm



COMMERCIAL TNC

TEST/CHARACTERISTICS	VALUES/REMARKS	
----------------------	----------------	--

ELECTRICAL CHARACTERISTICS

Impedance	50 Ω	75 Ω
Frequency range	DC - 1.5 GHz	
Test voltage	1500 V rms	
Operating voltage	500 V rms	
Insulation resistance	5000 m Ω min (500 V)	
Contact resistance	10 m Ω max	

ENVIRONMENTAL CHARACTERISTICS

Temperature range	-35°C / + 70°C
-------------------	----------------

PLATING

Body	Nickel
Center contacts	Gold

STRAIGHT PLUGS CRIMP TYPE FOR FLEXIBLE CABLE

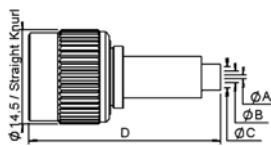


Fig. 1

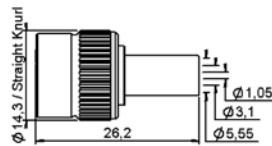


Fig. 2

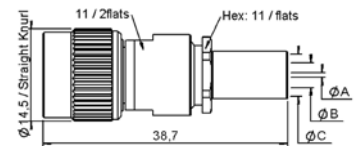


Fig. 3

Cable group	Part number	Fig	Dimensions (mm)				Captive center contact	Assembly instructions	Packaging	Note
			A	B	C	D				
2.6 / 50 S	R143 075 000	1	0.6	1.75	3.25	29.6	yes	M 03	100 pieces	commercial version
	R143 075 161							full crimp		
5 / 50 S	R143 082 000	2				M 02		commercial version, full crimp		
	R143 082 161									
5 / 50 S	R143 072 000	3	1.05	3.1	5.55	no	M 05	unit		
5 / 50 D	R143 073 000			3.075	5.5	yes	M 10			
6 / 75 + 93	R143 074 000			0.75	3.9	6.6	M 05			

STRAIGHT PLUGS CLAMP TYPE FOR FLEXIBLE CABLE

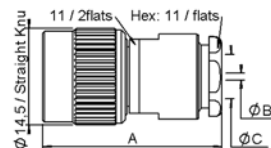


Fig. 1

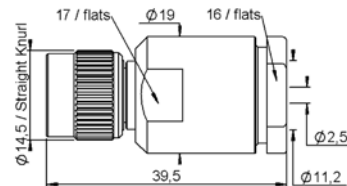
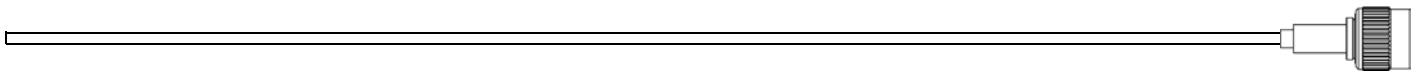
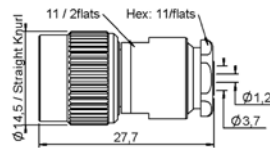


Fig. 2

Cable group	Part number	Fig.	Dimensions (mm)			Captive center contact	Assembly instructions	Packaging	Note
			A	B	C				
2.6 / 50 + 75	R143 004 000	1	26.5	0.6	3.1	yes	M 06	Unit	
5 / 50 S + D	R143 008 000		27.1	1.2	5.6	no	M 07	100 pieces	conical braid clamp
6 / 75 + 93	R143 012 000		27	1.05	6.65	yes	M 07	Unit	
10 + 11 / 50	R143 018 000	2					M 07		



STRAIGHT PLUG CLAMP TYPE FOR SEMI RIGID CABLE



Cable group	Part number	Captive center contact	Assembly instructions	Packaging
.141"	R143 052 000	no	M 08	Unit

RIGHT ANGLE PLUGS CRIMP TYPE FOR FLEXIBLE CABLE

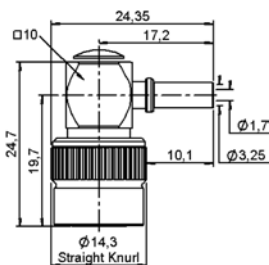


Fig. 1

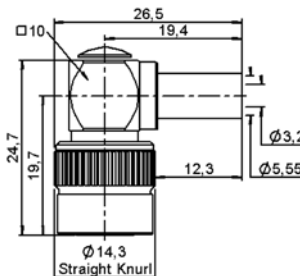


Fig. 2

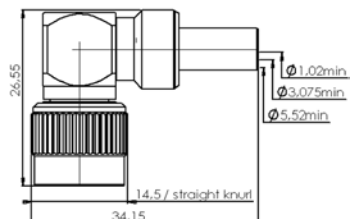
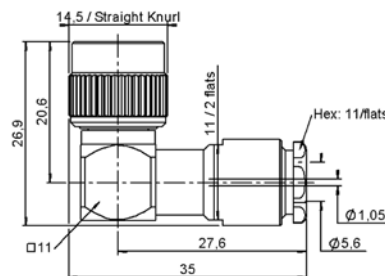


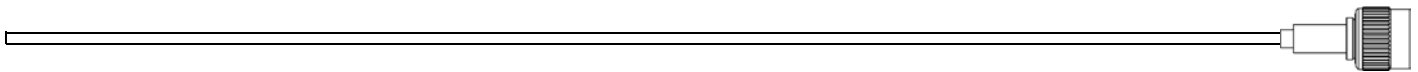
Fig. 3

Cable group	Part number	Fig.	Captive center contact	Assembly instructions	Packaging	Note
2.6 / 50 S	R143 181 161	1	yes	M 04	100 pieces	commercial version
5 / 50 S	R143 182 161	2		M 04		
	R143 182 000	3		M 01	unit	

RIGHT ANGLE PLUG CLAMP TYPE FOR FLEXIBLE CABLE



Cable group	Part number	Captive center contact	Assembly instructions	Packaging
5 / 50 S + D	R143 156 000	yes	M 07	Unit



STRAIGHT JACKS CRIMP TYPE FOR FLEXIBLE CABLE

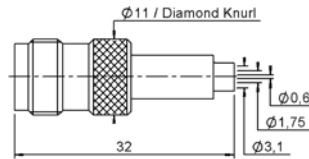


Fig. 1

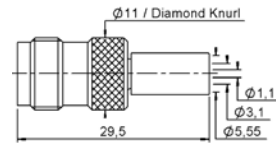
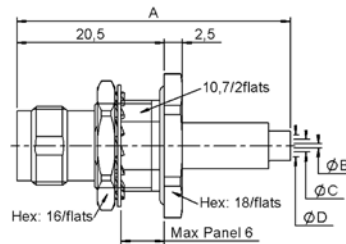


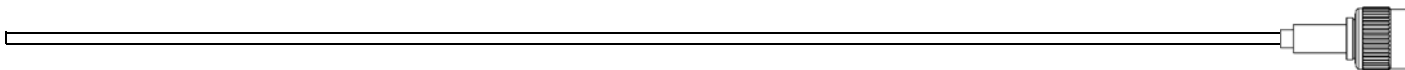
Fig. 2

Cable group	Part number	Fig	Captive center contact	Assembly instructions	Packaging	Note
2.6 / 50 S + D	R143 237 000	1	yes	M03	Unit	
5 / 50 S	R143 235 161	2	yes	M02	100 pieces	commercial version, full crimp

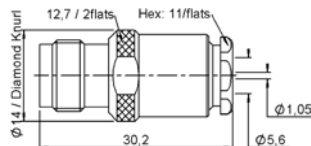
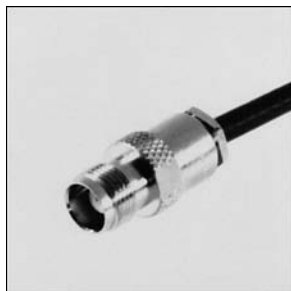
STRAIGHT BULKHEAD JACKS CRIMP TYPE FOR FLEXIBLE CABLE (REAR MOUNT)



Cable group	Part number	Dimensions (mm)				Captive center contact	Assembly instructions	Panel drilling	Packaging	Note
		A	B	C	D					
2.6 / 50 S	R143 331 161	38	0.6	1.75	3.10	yes	M03	P09+P11	100 pieces	commercial version, panel sealed
5 / 50 S	R143 332 161	35	1.05	3.10	5.55		M02			commercial version, panel sealed, full crimp

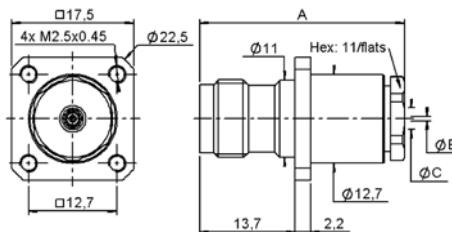


STRAIGHT JACK CLAMP TYPE FOR FLEXIBLE CABLE



Cable group	Part number	Captive center contact	Assembly instructions	Packaging
5 / 50 S	R143 207 000	no	M07	Unit

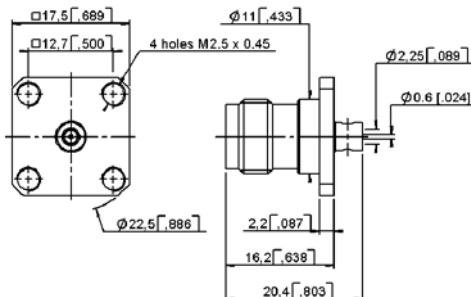
STRAIGHT SQUARE FLANGE JACKS CLAMP TYPE FOR FLEXIBLE CABLE



Cable group	Part number	Dimensions (mm)			Captive center contact	Assembly instructions	Panel drilling	Packaging
		A	B	C				
2.6 / 50 + 75	R143 254 000	29.8	0.6	3.1	yes	M06	P04	Unit
5 / 50 S + D	R143 258 000	30.2	1.05	5.6	no	M07		

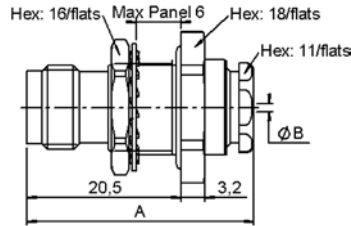
Also for screws type 3-56 UNF 2A

17.5 mm SQUARE FLANGE STRAIGHT JACK SOLDER TYPE FOR SEMI RIGID CABLE



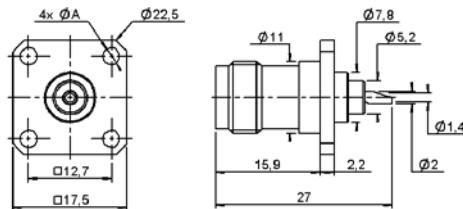
Cable group	Part number	Captive center contact	Assembly instructions	Panel drilling	Packaging
.085"	R143 257 440	no	M12	P01	Unit

STRAIGHT BULKHEAD JACKS PANEL SEALED REAR MOUNT



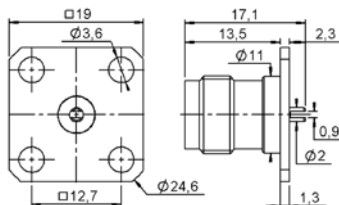
Cable group	Part number	Dimensions (mm)		Captive center contact	Assembly instructions	Panel drilling	Packaging
		A	B				
2.6 / 50	R143 324 000	29.6	3.1	yes	M11	P09	100 pieces
5 / 50 S	R143 325 000	30.17	5.6		M07		Unit

17.5 mm SQUARE FLANGE STRAIGHT FEMALE RECEPTACLES



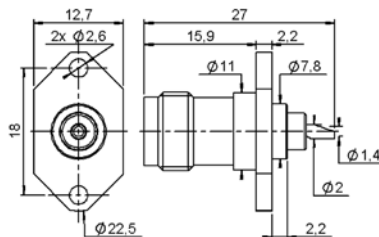
Part number	Dimension A (mm)	Captive center contact	Panel drilling	Packaging	Note
R143 404 000	M2.5 x 0.45	yes	P05	unit	Solder pot
R143 405 000	2.6			100 pieces	

19 mm SQUARE FLANGE STRAIGHT FEMALE RECEPTACLE



Part number	Captive center contact	Panel drilling	Packaging	Note
R143 420 000	no	P02	Unit	Slotted contact

2 HOLES FLANGE STRAIGHT FEMALE RECEPTACLE



Part number	Captive center contact	Panel drilling	Packaging	Note
R143 453 000	yes	P07	Unit	Solder pot contact

BULKHEAD STRAIGHT FEMALE RECEPTACLES

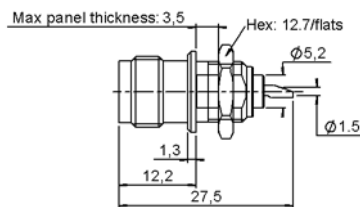


Fig. 1

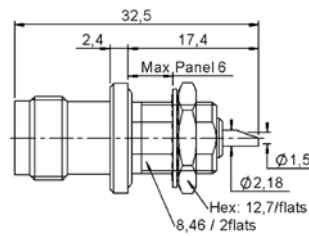
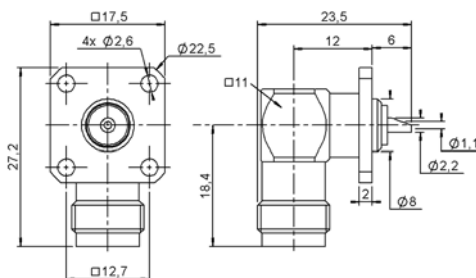


Fig. 2

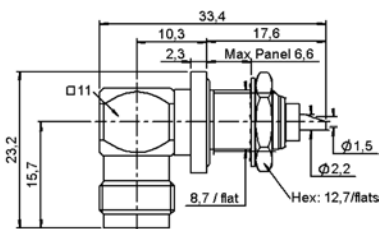
Part number	Fig	Captive center contact	Panel drilling	Packaging	Note
R143 557 000	1	yes	P08	Unit	Front mount, solder pot contact
R143 603 000	2		P10		Panel sealed, front mount, solder pot contact

17.5 mm SQUARE FLANGE RIGHT ANGLE FEMALE RECEPTACLE



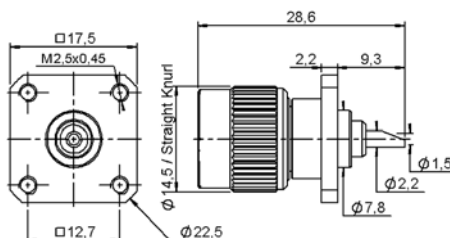
Part number	Captive center contact	Panel drilling	Packaging	Note
R143 654 000	yes	P06	Unit	Solder pot contact

RIGHT ANGLE BULKHEAD FEMALE RECEPTACLE



Part number	Captive center contact	Panel drilling	Packaging	Note
R143 680 000	yes	P08	Unit	Panel sealed, front mount, solder pot contact

17.5 mm SQUARE FLANGE STRAIGHT MALE RECEPTACLE



Part number	Captive center contact	Panel drilling	Packaging	Note
R143 440 000	yes	P03	Unit	Solder pot contact

IN SERIES ADAPTERS

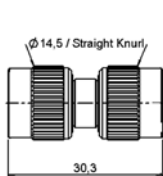


Fig. 1

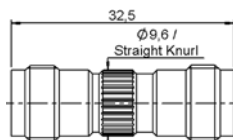


Fig. 2

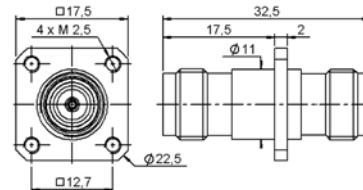


Fig. 3

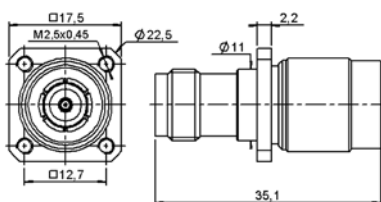


Fig. 4

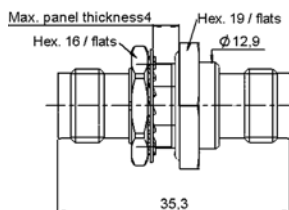


Fig. 5

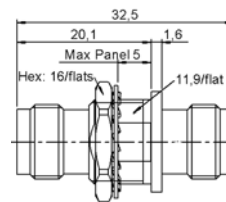


Fig. 6

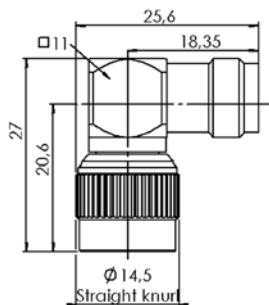


Fig. 7

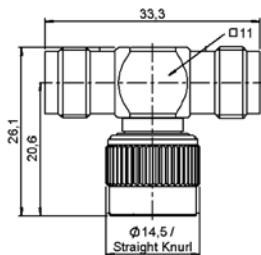


Fig. 8

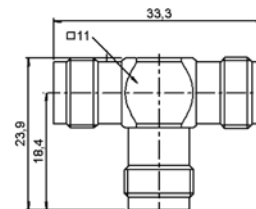


Fig. 9

Part number	Captive center contact	Fig	Panel drilling	Packaging	Note
R143 703 000	yes	1	P01	Unit	Male-male
R143 704 000		2			Female-female
R143 710 000		3			Square flange female-female
R143 713 000		4	P09	100 pieces	Square flange slide on type male-female
R143 753 000		5			Bulkhead hermetic, panel sealed female-female
R143 720 161		6	Commercial version, bulkhead female-female		
R143 770 000		7	unit	unit	Right angle male-female
R143 780 000		8			Female female male
R143 782 000		9			Female female female

PROTECTIVE CAPS

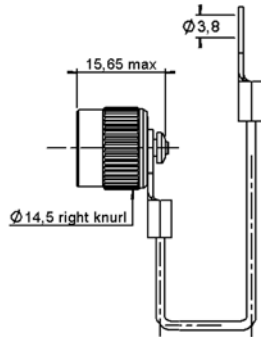


Fig. 1

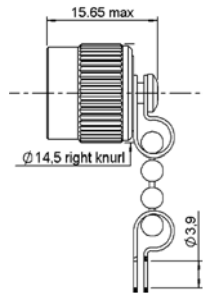


Fig. 2

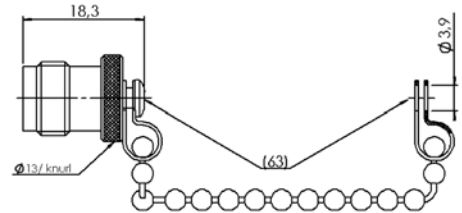
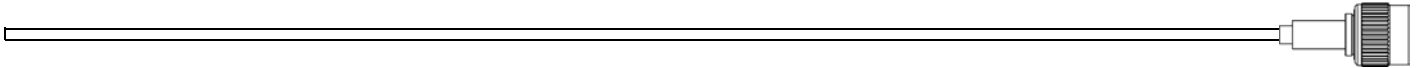
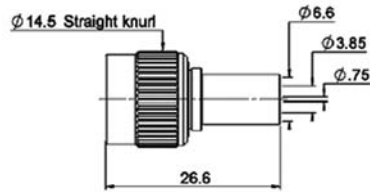


Fig. 3

Part number	Fig.	Finish	Packaging	Note
R143 805 000	1	Black chromium	Unit	Male with cord
R143 812 000	2	Nickel		Male with chain
R143 835 000	3		100 pieces	Female with chain

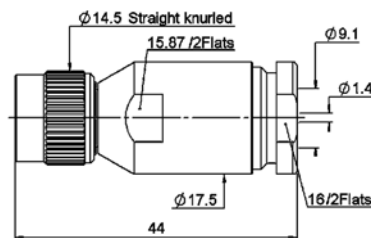


STRAIGHT PLUGS CRIMP TYPE FOR FLEXIBLE CABLE



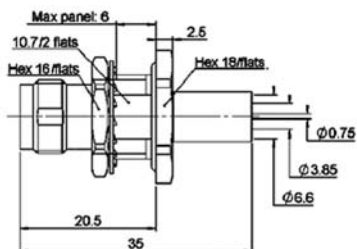
Cable group	Part number	Captive center contact	Assembly instructions	Packaging	Note
6 / 75 + 93	R144 085 000	no	M02	Unit	Full crimp
	R144 085 161	yes		100 pieces	Commercial version - full crimp

STRAIGHT PLUG CLAMP TYPE FOR FLEXIBLE CABLE



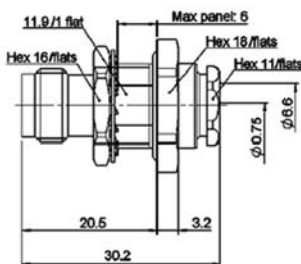
Cable group	Part number	Captive center contact	Assembly instructions	Packaging
8 / 75	R144 017 000	yes	M09	Unit

STRAIGHT BULKHEAD JACKS CRIMP TYPE FOR FLEXIBLE CABLE



Cable group	Part number	Captive center contact	Panel drilling	Assembly instructions	Packaging	Note
6 / 75 + 93	R144 334 000	no	P09 or P11	M02	Unit	Panel sealed
	R144 334 161	yes			100 pieces	Commercial version - panel sealed

STRAIGHT BULKHEAD JACK, CRIMP TYPE, FOR FLEXIBLE CABLE



Cable group	Part number	Captive center contact	Assembly instructions	Panel drilling	Packaging	Note
6 / 75	R144 329 000	yes	M07	P09	Unit	Panel sealed

IN SERIES ADAPTERS

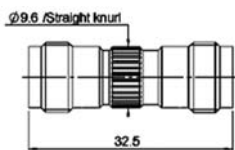


Fig. 1

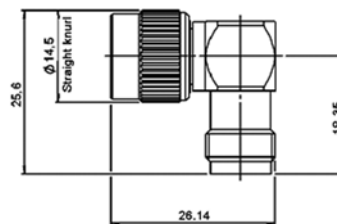
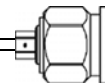


Fig. 2

Part number	Fig	Captive center contact	Packaging
R144 704 000	1	yes	Unit
R144 770 000	2		



TEST/CHARACTERISTICS	MIL-C-39012 A	VALUES/REMARKS
----------------------	---------------	----------------

ELECTRICAL CHARACTERISTICS

Impedance		50 Ω
Frequency range		DC - 18 GHz
V.S.W.R.	3-14	Semi-rigid cable: 1.17 max Flexible cable: 1.35 at 12.4 GHz
		In series adapter: 1.35 max
Insertion loss	3-27	0.18 dB max at 9 GHz
RF leakage	3-26	-60 dB min from 2 to 3 GHz
Insulation resistance	3-11	5000 MΩ min
Contact resistance center contact (mΩ) outer contact (mΩ)	3-16	Initial 1.5 0.2
		After proof 2 -
Working voltage		At sea level: 500 V rms at 70000 ft (21000 m): 125 V rms
Dielectric withstanding voltage	3-17	At sea level: 1500 V rms at 70000 ft (21000 m): 375 V rms
RF withstanding voltage	3-23	At sea level: 1000 V rms (5 MHz sine wave)

MECHANICAL CHARACTERISTICS

Durability	3-15	500 matings
Mating / unmating		Axial force: not applicable Torque: 1.96 inch pounds (22.6 N.cm)
Recommended mating torque		22.98 inch pounds (265 N.cm)
Proof torque		29.40 inch pounds (339 N.cm)
Coupling mechanism retention force	3-25	100 Lbf (44.5 daN)
Cablings retention force	3-24	51 Lbf (227 N min) (cable dia. .189 (4.8) to .228 (5.8))
		76.4 Lbf (340 N min) (cable dia. .250 (6.35) and above)
Center contact retention		Axial: 6.06 Lbf (27 N)

ENVIRONMENTAL CHARACTERISTICS

Temperature range		Standard models Hermetic sealed models Models for semi-rigid cables	-65°C / + 165°C -65°C / +100°C -65°C / +105°C
Combined climate tests			
Thermal shock	3-20	MIL-STD-202, method 107, condition B	
High temperature endurance		MIL-STD-202, method 108	
Corrosion (salt spray)	3-13	MIL-STD-202, method 101, condition B	
Vibrations	3-18	MIL-STD-202, method 204, condition B	
Shocks	3-19	MIL-STD-202, method 213, condition G	
Moisture resistance	3-21	MIL-STD-202, method 106	
Low pressure	3-22	Not applicable	
Hermetic seal		Applied vacuum 10 ⁻⁶ mm of Hg (Torrs) Leakage rate < 10 ⁻⁶ atm/cm ³ /s	
Leakage		Pressure 3.5 bars; duration 2 mn; temperature 15°C to 25°C	

MATERIALS

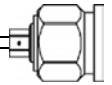
Body		Stainless steel
Center contact	male female	Brass Bronze
Ferrules		Brass
Insulators		PTFE teflon
Gaskets		Silicone elastomer

PLATING

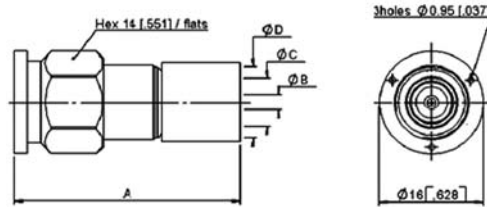
Body		Passivated
Center contacts		Gold plated

Standard packaging = unit

All dimensions are given in mm (inch)

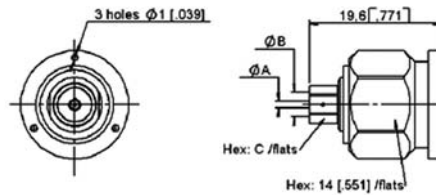


STRAIGHT PLUGS CRIMP TYPE FOR FLEXIBLE CABLE



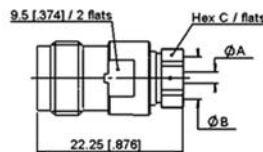
Cable group	Part number	Dimensions mm(inch)				Assembly instructions
		A	B	C	D	
5 / 50 D	R143 082 700	30 (1.181)	1.05 (.041)	3.2 (.126)	5.5 (.218)	M 02
11 / 50	R143 089 700	35 (1.378)	2.45 (.096)	7.5 (.295)	11.05 (.435)	

STRAIGHT PLUGS SOLDER TYPE FOR SEMI-RIGID CABLE

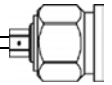


Cable group	Part number	Dimensions mm(inch)			Assembly instructions
		A	B	C	
.141"	R143 051 700	1 (.039)	3.65 (.144)	5 (.197)	M 13
.250"	R143 054 700	1.7 (.067)	6.45 (.254)	8 (.315)	M 14

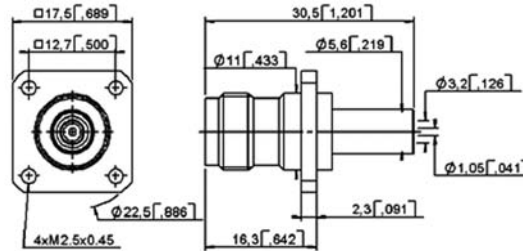
STRAIGHT JACKS SOLDER TYPE FOR SEMI-RIGID CABLE



Cable group	Part number	Dimensions mm(inch)			Assembly instructions
		A	B	C	
.141"	R143 227 700	1 (.039)	3.65 (.143)	5 (.197)	M 13
.250"	R143 228 700	1.7 (.067)	6.45 (.254)	8 (.315)	M 14

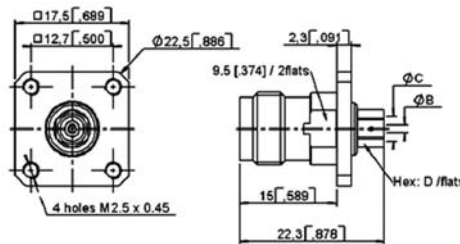


STRAIGHT SQUARE FLANGE JACK CRIMP TYPE FOR FLEXIBLE CABLE



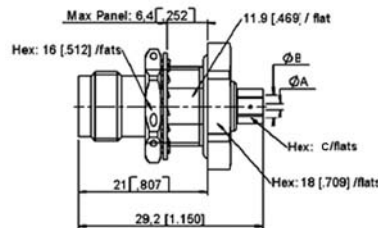
Cable group	Part number	Panel drilling	Assembly instructions
5 / 50 D	R143 292 700	P01	M 02

STRAIGHT SQUARE FLANGE JACKS SOLDER TYPE FOR SEMI-RIGID CABLE

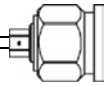


Cable group	Part number	Dimensions mm(inch)				Panel drilling	Assembly instructions
		A	B	C	D		
.141"	R143 273 700	8 (.315)	1 (.039)	3.65 (.144)	5 (.197)	P12	M 13
.250"	R143 274 700	8.8 (.346)	1.7 (.067)	6.45 (.254)	8 (.315)		M 14

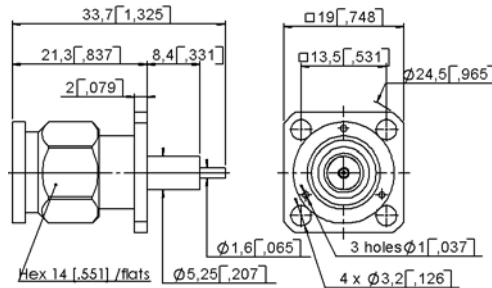
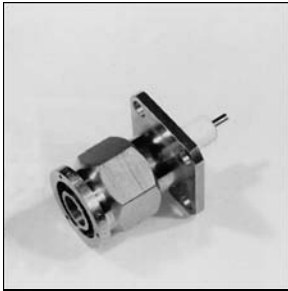
STRAIGHT BULKHEAD JACKS SOLDER TYPE FOR SEMI-RIGID CABLE



Cable group	Part number	Dimensions mm(inch)			Panel drilling	Assembly instructions
		A	B	C		
.141"	R143 321 700	1 (.039)	3.65 (.144)	5 (.197)	P09	M 13
.250"	R143 322 700	1.7 (.067)	6.45 (.254)	8 (.315)		M 14

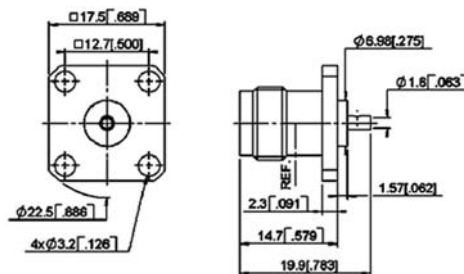
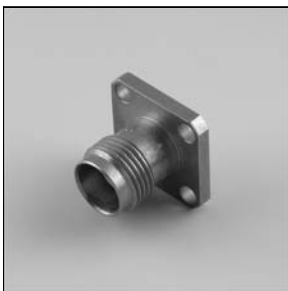


SQUARE FLANGE STRAIGHT MALE RECEPTACLE (extended dielectric - stub contact)



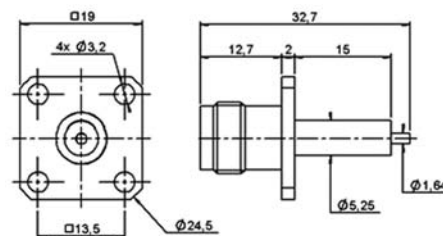
Part number	Captive center contact	Panel drilling
R143 446 700	yes	P14

SQUARE FLANGE STRAIGHT FEMALE RECEPTACLE

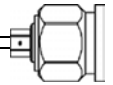


Part number	Captive center contact	Panel drilling
R143 410 700	yes	P15

SQUARE FLANGE STRAIGHT FEMALE RECEPTACLE (extended dielectric - stub contact)



Part number	Captive center contact	Panel drilling
R143 412 700	yes	P13
R143 413 700	no	



IN SERIES ADAPTERS

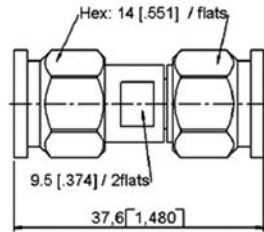


Fig. 1

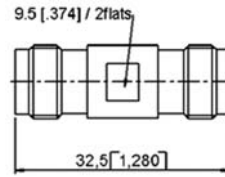


Fig. 2

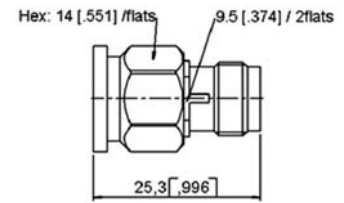


Fig. 3

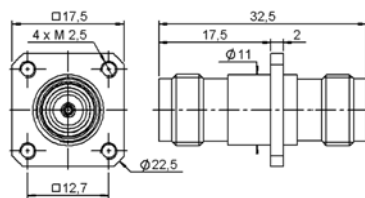


Fig. 4

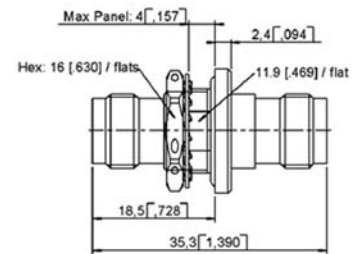
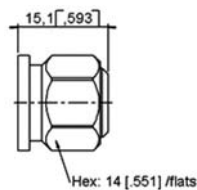


Fig. 5

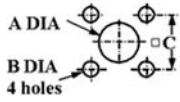
Part number	Fig.	Captive center contact	Panel drilling	Note
R143 703 700	1	yes		Male - male
R143 704 700	2			Female - female
R143 705 700	3			Male - female
R143 710 700	4		P16	Square flange female - female
R143 730 700	5		P09	Bulkhead panel sealed female - female

SHORT CIRCUIT CAP



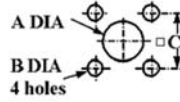
Part number
R143 850 700

P01



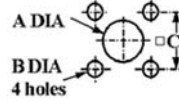
	MM		INCH	
	maxi	mini	maxi	mini
A	11.3	11.2	0.445	0.441
B	2.7	2.6	0.106	0.102
C	12.75	12.65	0.502	0.498

P02



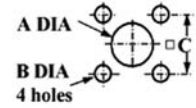
	MM		INCH	
	maxi	mini	maxi	mini
A	11.3	11.2	0.445	0.441
B	3.7	3.6	0.146	0.142
C	12.75	12.65	0.502	0.498

P03



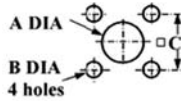
	MM		INCH	
	maxi	mini	maxi	mini
A	7.9	7.8	0.311	0.307
B	2.7	2.6	0.106	0.102
C	12.75	12.65	0.502	0.498

P04



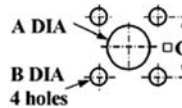
	MM		INCH	
	maxi	mini	maxi	mini
A (F. Mount)	13	12.9	0.512	0.508
A (R. Mount)	11.3	11.2	0.445	0.441
B	2.7	2.6	0.106	0.102
C	12.75	12.65	0.502	0.498

P05



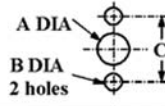
	MM		INCH	
	maxi	mini	maxi	mini
A F.mount	8	7.9	0.315	0.311
A R.mount	11.3	11.2	0.445	0.441
B	2.8	2.7	0.11	0.106
C	12.75	12.65	0.502	0.498

P06



	MM		INCH	
	maxi	mini	maxi	mini
A	8.3	8.2	0.327	0.323
B	2.7	2.6	0.106	0.102
C	12.75	12.65	0.502	0.498

P07



	MM		INCH	
	maxi	mini	maxi	mini
A (F. Mount)	8.3	8.2	0.327	0.323
A (R. Mount)	11.4	11.2	0.449	0.441
B	2.7	2.6	0.106	0.102
C	18.1	17.9	0.713	0.705

P08



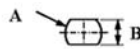
	MM		INCH	
	maxi	mini	maxi	mini
A	9.8	9.7	0.386	0.382
B	8.93	8.81	0.352	0.347

P09



	MM		INCH	
	maxi	mini	maxi	mini
A	12.8	12.7	0.504	0.5
B	12.1	12	0.476	0.472

P10



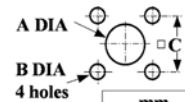
	MM		INCH	
	maxi	mini	maxi	mini
A	9.75	9.65	0.384	0.38
B	8.65	8.55	0.341	0.337

P11



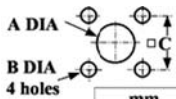
	MM		INCH	
	maxi	mini	maxi	mini
C	12.8	12.7	0.504	0.5
D	10.9	10.8	0.429	0.425

P12



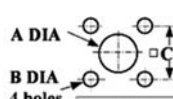
	mm		inch	
	Maxi	mini	Maxi	mini
A F.mount	9.1	9	.358	.354
A R.mount	11.3	11.2	.445	.441
B	2.7	2.6	.106	.102
C	12.75	12.65	.502	.498

P13



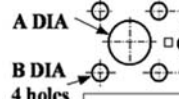
	mm	
	Maxi	mini
A (F. Mount)	5.5	5.4
A (R. Mount)	11.3	11.2
B	3.3	3.2
C	13.55	13.45

P14



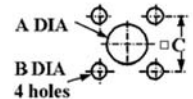
	mm		inch	
	Maxi	mini	Maxi	mini
A	5.5	5.4	.217	.213
B	3.3	3.2	.130	.126
C	13.55	13.45	.533	.530

P15



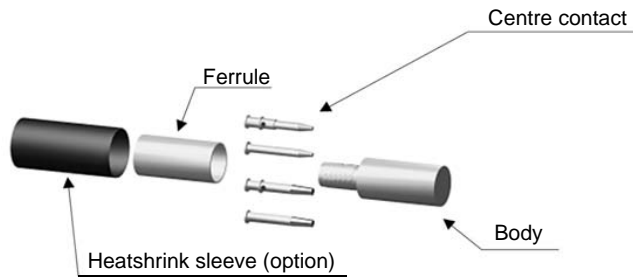
	mm		inch	
	Maxi	mini	Maxi	mini
A	7.1	7	.280	.276
B	3.3	3.1	.130	.122
C	12.75	12.65	.502	.498

P16

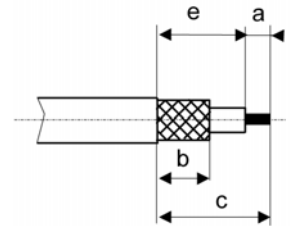


	MM		INCH	
	maxi	mini	maxi	mini
A	11.3	11.2	0.445	0.441
B	3.3	3.2	.130	.126
C	12.75	12.65	0.502	0.498

M 01

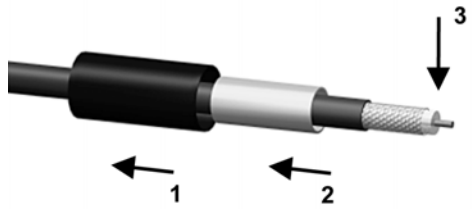


STRIPPING DIMENSIONS

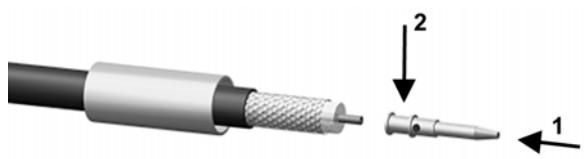


Part number	Stripping length (mm)				Dies included	Crimp tools
	a	b	c	e		
R143 182 000	4	8.5	15	11	R282 223 000 Hex 1.73-5.41	MIL standard R282 293 000 (M22520/5-01) + dies R282 235 011 (M22520/5-11) Hex 1.73-5.41

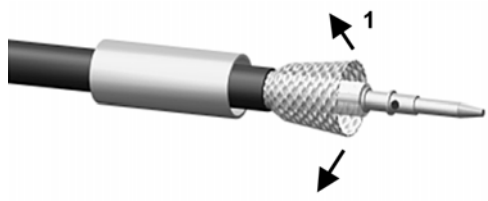
- 1**
- Slide the heatshrink sleeve onto the cable (option).
 - Slide the ferrule onto the cable.
 - Strip the cable.



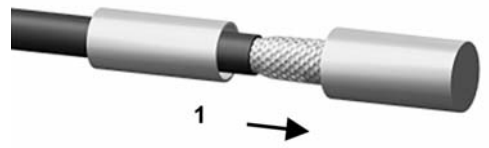
- 2**
- Slide the center contact on until it bottoms against the cable dielectric.
 - Solder the center contact.
 - Clean solder area.



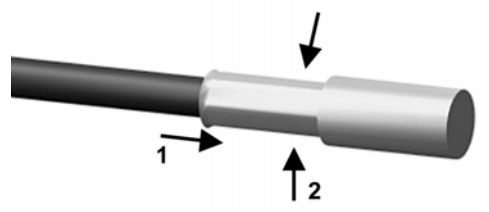
- 3**
- Fan the braid.



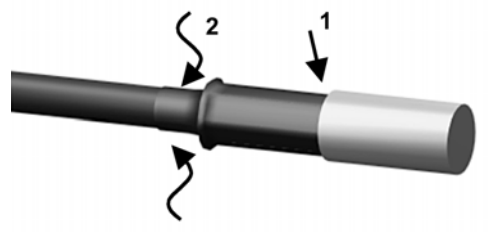
- 4**
- Slide the cable into the body until it bottoms against the insulator.



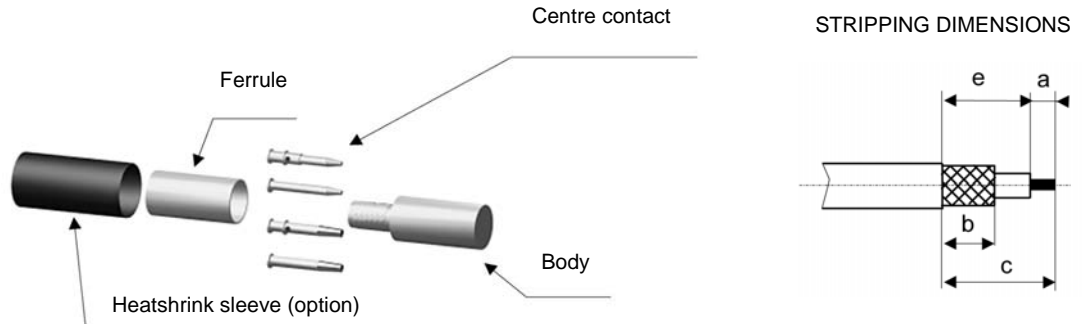
- 5**
- Slide the ferrule over the braid.
 - Crimp the ferrule with crimping tool (see table).



- 6**
- Cut the excess of braid if necessary.
 - Slide the sleeve over the ferrule and heatshrink it in place (option).



M 02



Part number	Stripping length (mm)				Dies included	Crimp tools MIL standard R282 293 000 (M22520/5-01) + dies
	a	b	c	e		
R143 082 000 R143 082 161	4	8.5	15	11	R282 223 000 Hex 1.73-5.41	R282 235 011 (M22520/5-11) Hex 1.73-5.41
R143 082 700	2.5	6.5	11.5	9		
R143 089 700	3	6	14	10	R282 231 000 Hex 2.54-10.54	R282 231 000 Hex 10.54
R143 292 700	2.5	6.5	11.5	9	R282 223 000 Hex 1.73-5.41	R282 235 011 (M22520/5-11) Hex 1.73-5.41
R143 235 161 R143 332 161	4	8.5	15	11		R282 235 011 (M22520/5-11) Hex 1.73-5.41
R144 085 000 R144 085 161 R144 334 000 R144 334 161						R282 235 013 (M22520/5-11) Hex 1.73-6.48

1

- Slide the heatshrink sleeve onto the cable (option).
- Slide the ferrule onto the cable.
- Strip the cable.

2

- Slide the center contact on until it bottoms against the cable dielectric.
- Crimp the center contact with crimping tool (see table).

3

- Fan the braid.

4

- Slide the cable into the body until it bottoms against insulator.

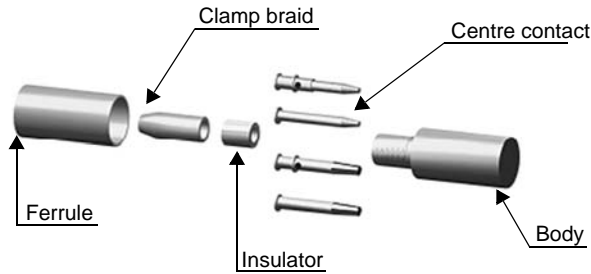
5

- Slide the ferrule over the braid.
- Crimp the ferrule with crimping tool (see table).

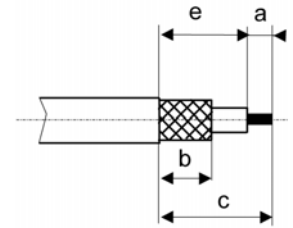
6

- Cut the excess of braid if necessary.
- Slide the sleeve over the ferrule and heatshrink it in place (option).

M 03



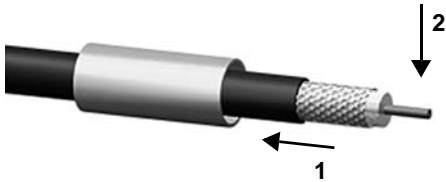
STRIPPING DIMENSIONS



Part number	Stripping length (mm)				Dies included	Crimp tools
	a	b	c	e		
R143 075 000 R143 075 161 R143 237 000 R143 331 161	4	10	18.5	14.5	R282 223 000 Hex 1.73-5.41	MIL standard R282 293 000 (M22520/5-01) + dies R282 235 011 (M22520/5-11) Hex 1.73-5.41

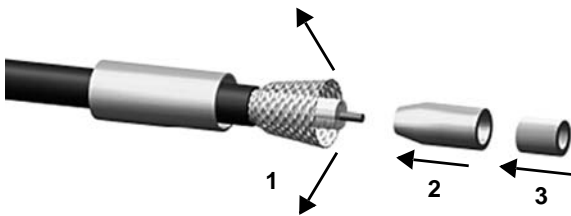
1

- Slide the ferrule onto the cable.
- Strip the cable.



2

- Fan the braid.
- Slide the braid clamp and the insulator between the dielectric and the braid.
- Slide the insulator between the dielectric and the braid.



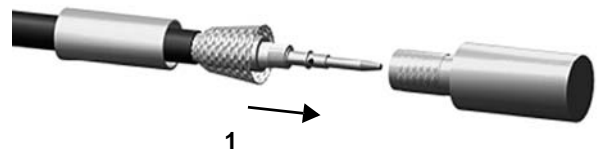
3

- Slide on the center contact until it bottoms against the cable dielectric.
- Solder or crimp the center contact with crimping tool (see table).
- Clean solder area if necessary.



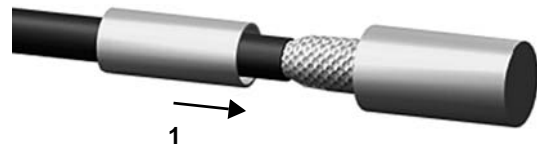
4

- Slide cable into body until it bottoms against insulator.



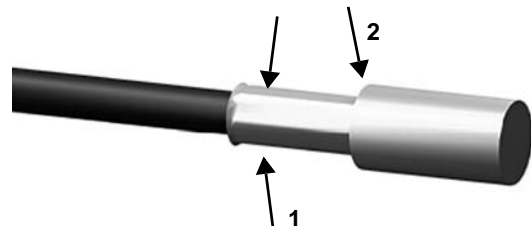
5

- Slide the ferrule over the braid.

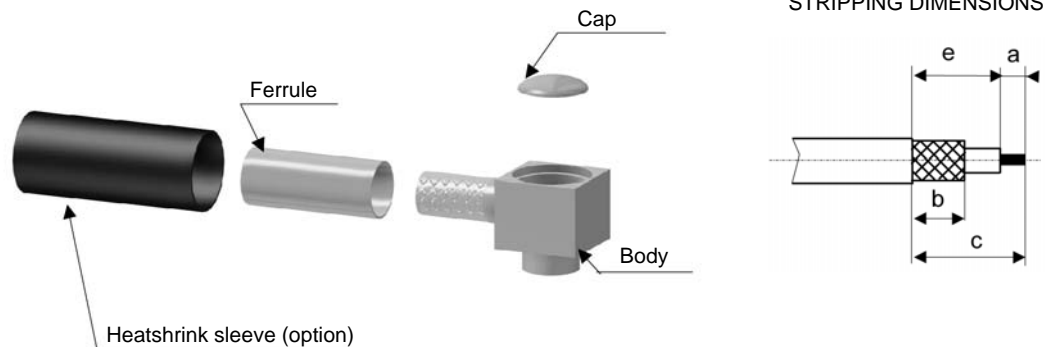


6

- Crimp the ferrule with crimping tool (see table).
- Cut the excess of braid if necessary.

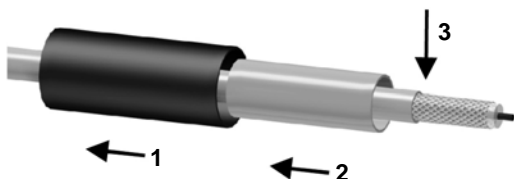


M 04



Part number	Stripping length (mm)				Dies included	Crimp tools
	a	b	c	e		
R143 181 161	2.5	6.5	16	13.5	R282 211 000 Hex 3.25	MIL standard R282 293 000 (M22520/5-01) + dies R282 235 003 (M22520/5-03) Hex 3.25
R143 182 161	2	7.5	16	14	R282 223 000 Hex 5.41	R282 235 011 (M22520/5-11) Hex 5.40

- 1**
- Slide the heatshrink sleeve onto the cable (option).
 - Slide the ferrule onto the cable.
 - Strip the cable.



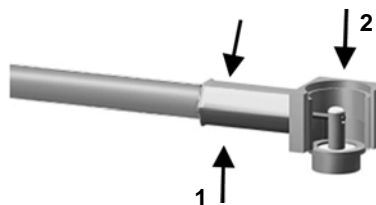
- 2**
- Fan the braid.



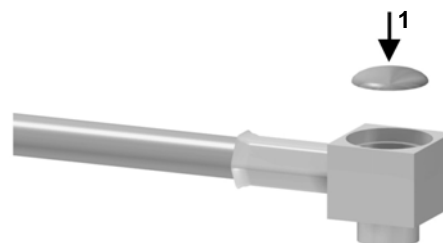
- 3**
- Push the connector body under the braid.
 - Slide the ferrule over the braid.



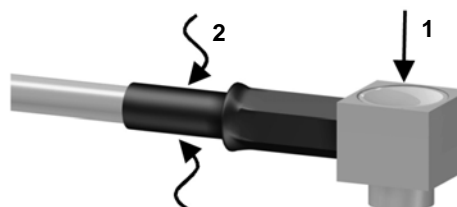
- 4**
- Crimp the ferrule with crimping tool (see table).
 - Solder the inner conductor.



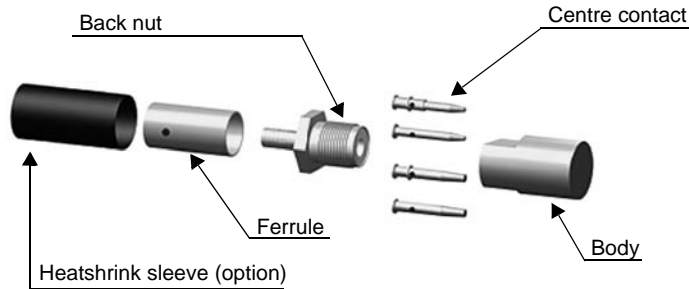
- 5**
- Place the cap into the body.



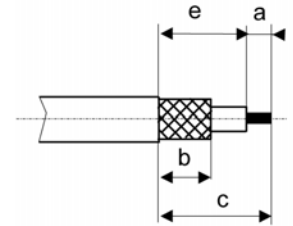
- 6**
- Press on the cap flush or slightly below the surface of the body assembly.
 - Slide the sleeve over the ferrule and heatshrink it in place (option).



M 05

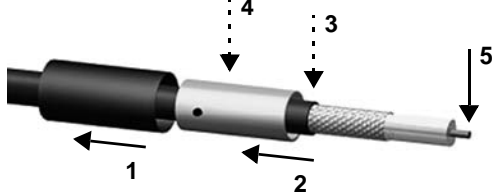


STRIPPING DIMENSIONS

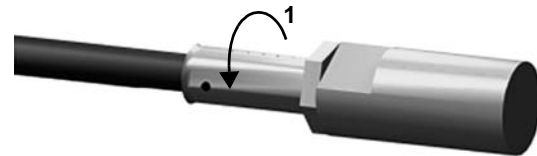
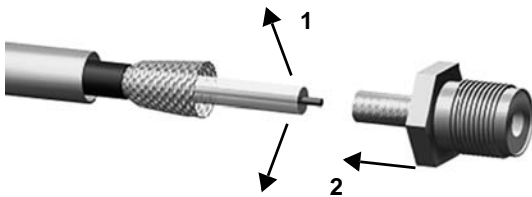


Part number	Stripping length (mm)				Dies included	Crimp tools MIL standard R282 293 000 (M22520/5-01) + dies
	a	b	c	e		
R143 072 000	7	8.5	26	19	R282 223 000 Hex 1.73-5.41	R282 235 011 (M22520/5-03) Hex 1.73-5.41
R143 074 000					R282 223 000 Hex 1.73-6.48	R282 235 013 (M22520/5-11) Hex 1.73-6.48

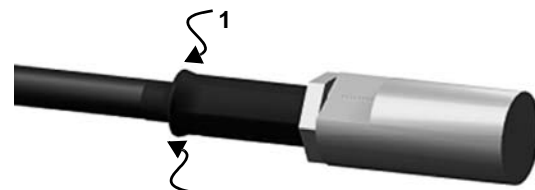
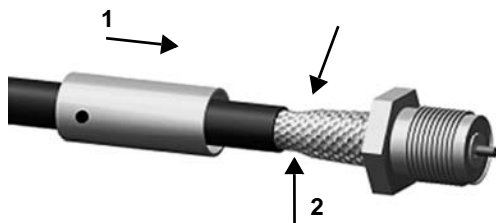
- 1**
- Slide the heatshrink sleeve onto the cable (option).
 - Slide the ferrule onto the cable.
 - Position the ferrule's hole at the front if soldering.
 - Position the ferrule's hole at the back if crimping.
 - Strip the cable.
- 4**
- Slide the center contact on until it bottoms against the insulator back nut.
 - Solder or crimp the contact (see table).



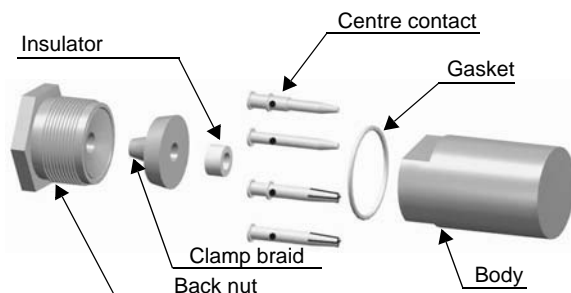
- 2**
- Fan the braid.
 - Slide the cable into the back nut.
- 5**
- Screw the back nut into the connector body with the adapted wrench.
 - Recommended coupling torque (see table).



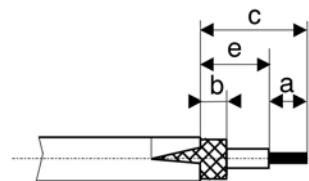
- 3**
- Slide the ferrule over the braid.
 - Crimp the ferrule with crimping tool (see table).
- 6**
- Slide the sleeve over the ferrule and heatshrink it in place (option).



M 06



STRIPPING DIMENSIONS



Part number	Stripping length (mm)				Coupling torque
	a	b	c	e	
R143 004 000 R143 254 000	4	2	9	5	450 N.cm

1

- Slide the back nut onto the cable.
- Strip the cable.
- Cut 2 slots in the jacket if necessary.

2

- Slide the clamp braid sleeve between the cable dielectric and the braid.

3

- Cut the braid flush with the clamp braid sleeve.
- Slide the spacer onto the cable.
- Slide the center contact on until it bottoms against the cable dielectric.

4

- Solder the center contact onto the inner conductor.
- Slide the back nut over the cable assembly.

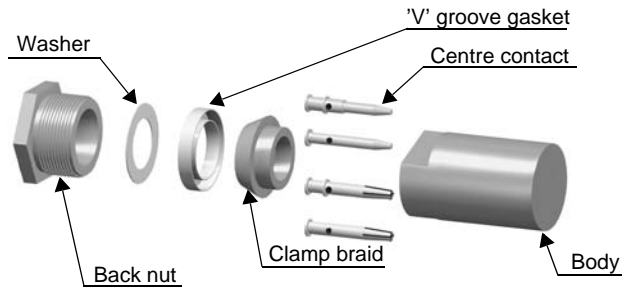
5

- Mount the gasket into the body.

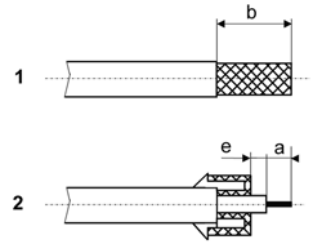
6

- Screw sub-assembly into the connector body with the adapted wrench.
- Recommended coupling torque (see table).

M 07



STRIPPING DIMENSIONS



Part number	Stripping length (mm)			Coupling torque
	a	b	e	
R143 008 000	2.5	5	1.5	450 N.cm
R143 012 000		7	3	
R143 018 000	3	9	1	800 N.cm
R143 156 000		7	2.5	450 N.cm
R143 207 000	2.5	5	3	
R143 258 000			1.5	
R143 325 000 R144 329 000			7	

1

- Strip the cable as shown in sketch 1.

2

- Slide the back nut, the washer and the 'V' groove gasket onto the cable.
- Slide the clamp braid sleeve over the braid.

3

- Fold the braid back and trim off the extra braid.
- Trim dielectric back as shown in sketch 2.

4

- Slide the back nut over the cable assembly.
- Slide the center contact onto the inner conductor.

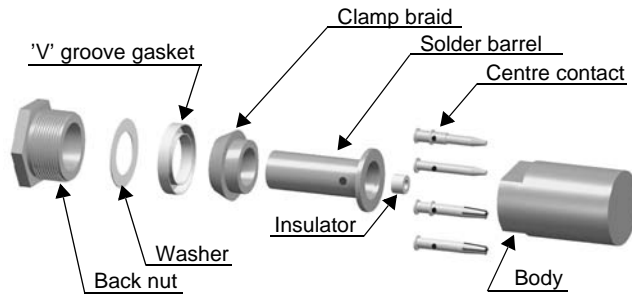
5

- Solder the center contact onto the inner conductor.

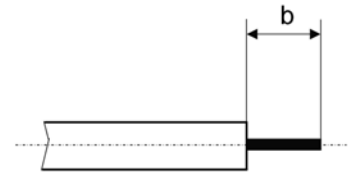
6

- Screw sub-assembly into the connector body with the adapted wrench.
- Recommended coupling torque (see table).

M 08



STRIPPING DIMENSIONS



We recommend a cable thermal preconditioning before assembly

Part number	Stripping length b (mm)	Coupling torque
R143 052 000	5.2	450 N.cm

1

- Strip the cable.
- Trim the cable inner conductor.
- Clean the cable.

2

- Slide the back nut, the washer, the 'V' groove gasket, the clamp braid sleeve and the solder barrel onto the cable.

3

- Position the solder barrel and the cable flush against the solder barrel gauge.
- Solder the solder barrel onto the cable.
- After cooling, remove the solder barrel gauge.

4

- Slide the insulator onto the cable inner conductor.
- Slide the center contact on until it bottoms against the insulator.

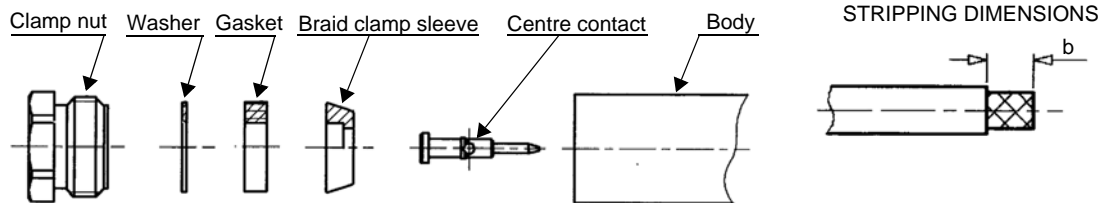
5

- Solder the center contact onto the inner conductor.
- Assemble the components.

6

- Screw sub-assembly into the connector body with the adapted wrench.
- Recommended coupling torque (see table).

M 09



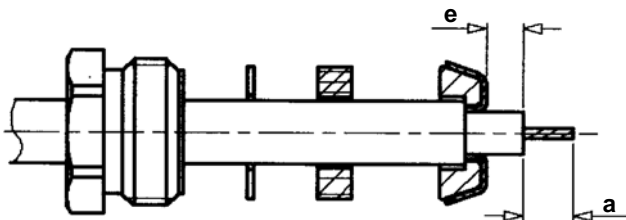
Part number	Stripping length (mm)		
	a	b	e
R144 017 000	3	10	3.5

1

- Strip the cable.

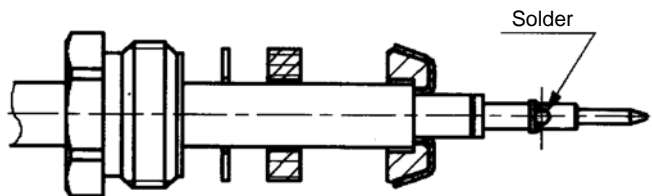
2

- Slide the clamp nut, the washer and the gasket onto the cable.
- Slide clamp braid sleeve over braid.
- Fold back braid and trim off surplus braid.
- Trim back dielectric as shown.



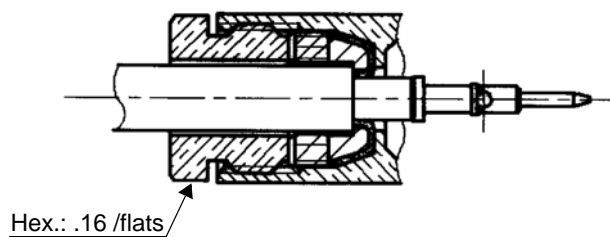
3

- Solder the cable inner conductor into center contact.

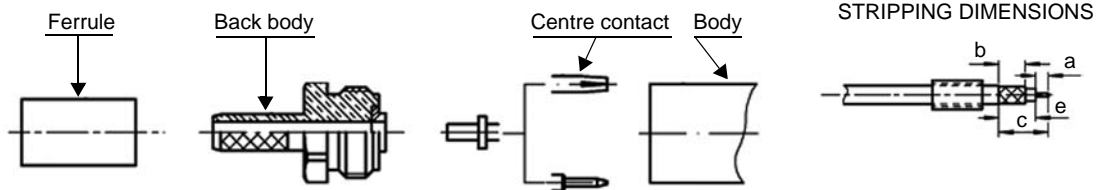


4

- Screw sub-assembly into the connector body. Recommended coupling torque 450 N.cm.



M 10



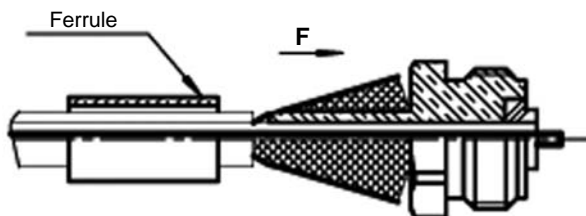
Part number	Stripping length (mm)				Dies included	Crimp tools
	a	b	c	e		
R143 073 000	7	8.5	26	19	R282 223 000 Hex 1.73-5.4	MIL standard R282 293 000 (M22520/5-01) + dies R282 235 011 (M22520/5-11) Hex 1.73-5.41

1

- Slide onto the cable the ferrule.
- Strip the cable.

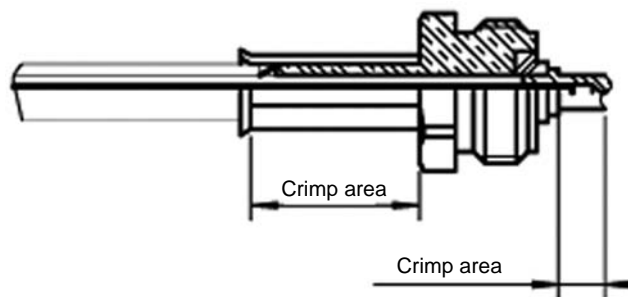
2

- Fan the braid.
- Slide the back body between dielectric and braid.
- Slide ferrule over the braid (in direction F).



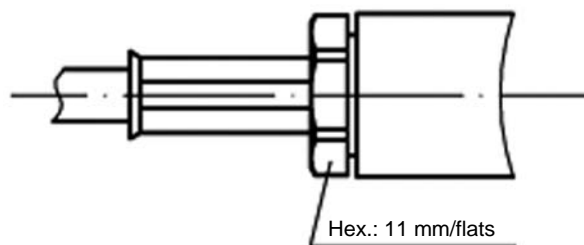
3

- Crimp the ferrule with crimping tool.
- Slide on the center contact until it bottoms against insulator.
- Crimp center contact with crimping tool.

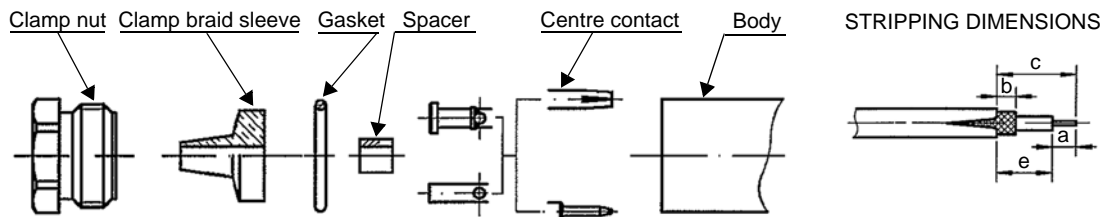


4

- Mount gasket into connector.
- Screw sub-assembly into the connector body (recommended coupling torque 450 N.cm - 39825 in.lb).



M 11



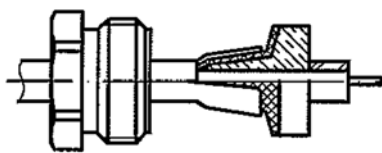
Part number	Stripping length (mm)			
	a	b	c	e
R143 324 000	4	2	9	5

1

- Slide clamp nut onto cable.
- Strip the cable.
- Cut 2 slots in the jacket if necessary.

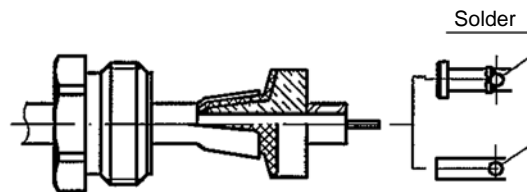
2

- Slide the clamp braid sleeve between cable dielectric and braid.
- Cut the braid flush with the clamp braid sleeve.
- Slide the spacer onto the cable.



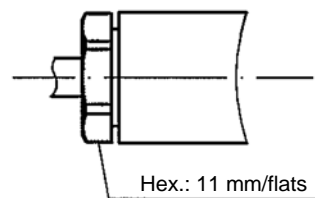
3

- Solder center contact onto cable center conductor.
- Slide back nut over clamp assembly.

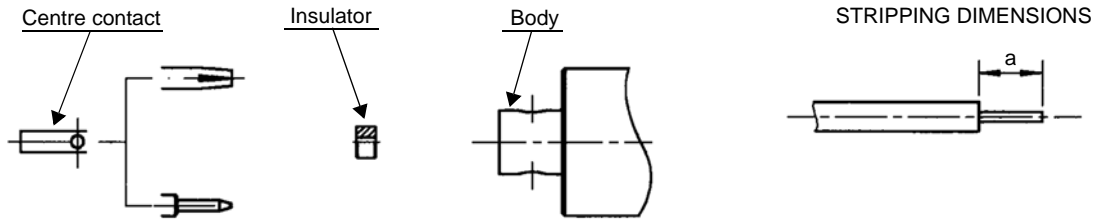


4

- Mount gasket into connector.
- Screw sub-assembly into the connector body (recommended coupling torque 450 N.cm - 39825 in.lb).



M 12



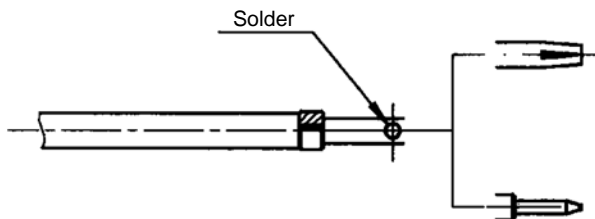
Part number	Stripping length a (mm)	Positioner
R143 257 440	4	R282 744 400

1

- Strip the cable.
- Clean the cable.

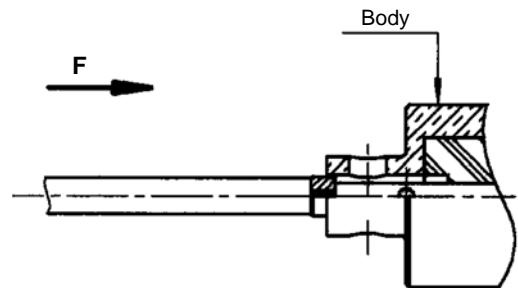
2

- Slide insulator onto the cable center conductor.
- Solder center contact onto cable center conductor.
- Clean solder area.



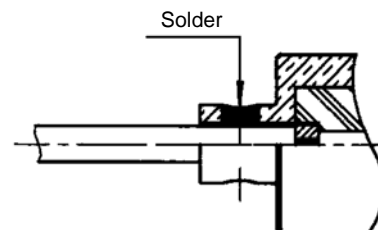
3

- Screw positioner onto connector.
- Slide sub-assembly into the connector body (in direction F).

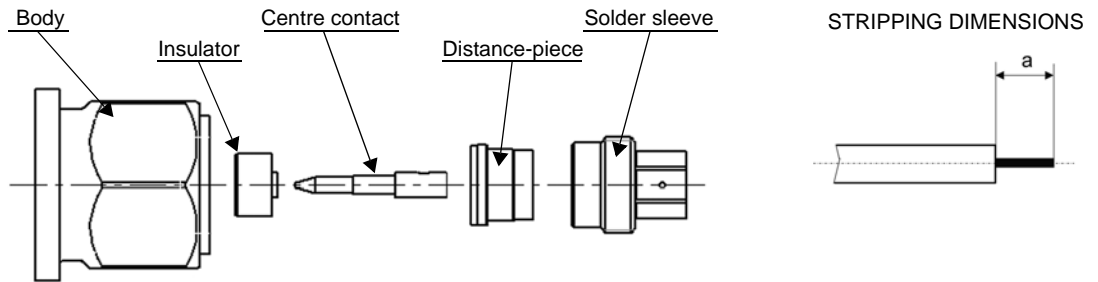


4

- Solder the cable into body of connector.
- After cooling remove positioner and clean soldered area.



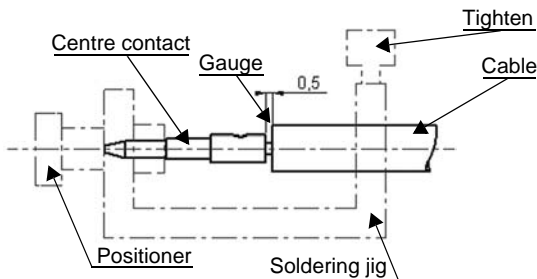
M 13



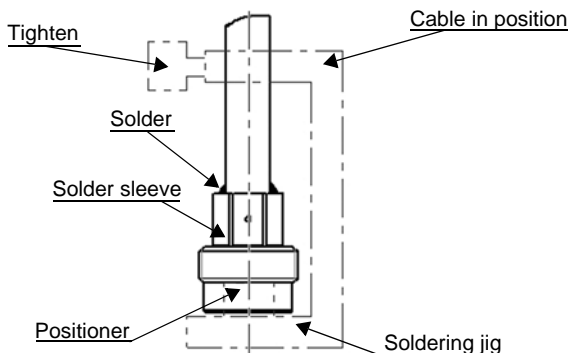
We recommend a thermal preconditioning cable

Part number	Stripping length a (mm)	Center contact positioner	Cable positioner	Soldering jig	Solder gauge thickness 0.5 mm	Milling cutter	Lock jig	Torque wrench
R143 051 700 R143 227 700 R143 273 700 R143 321 700	3	R282 744 271	R282 744 003	R282 740 000	R282 862 100	R282 915 020	R282 370 020	R282 321 020

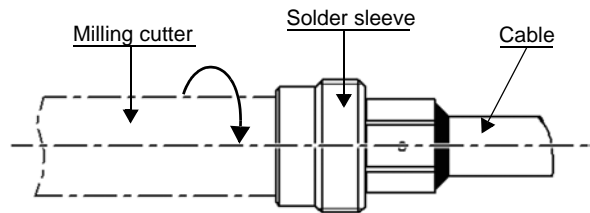
- 1**
- Strip the cable with the cable stripping tool.
 - Trim the cable inner conductor with the trimmer.
 - Clean the cable.
 - Screw the positioner onto the soldering jig.
 - Slide the cable assembly until it bottoms against positioner.
 - Tighten and solder the contact.



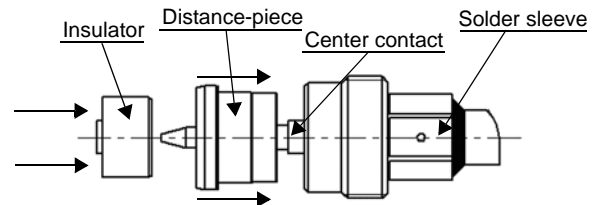
- 2**
- After cooling remove cable assembly from the jig.
 - Slide positioner into the solder sleeve.
 - Get in solder sleeve assembly onto the soldering jig and slide the cable until it bottoms against positioner.
 - Tighten.
 - Put 3 rings of solder around the cable and solder.



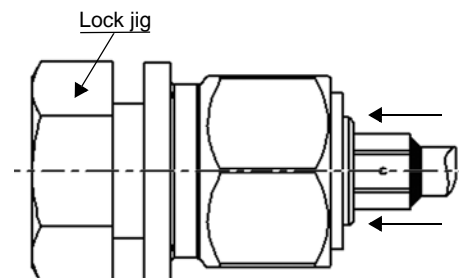
- 3**
- After cooling, remove the assembly from the jig.
 - Trim dielectric recess with the milling cutter.



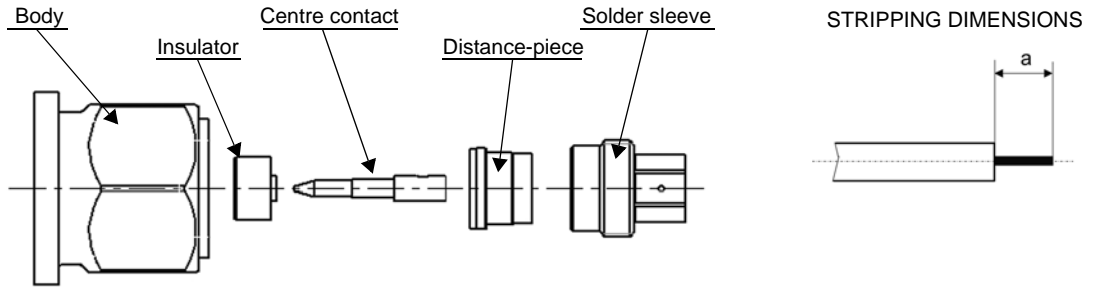
- 4**
- Slide the distance-piece on the solder sleeve.
 - Slide insulator on the center contact.



- 5**
- Slide the connector on the sleeve and lock it.



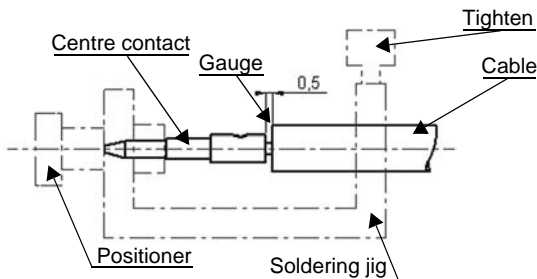
M 14



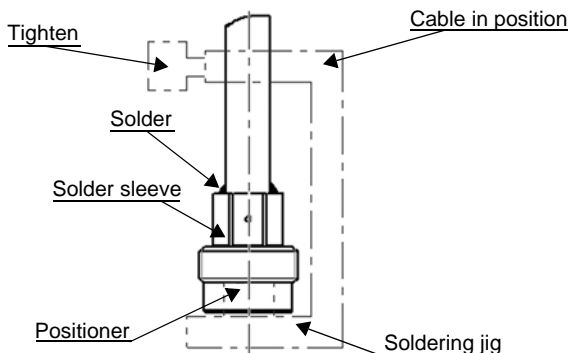
We recommend a thermal preconditioning cable

Part number	Stripping length a (mm)	Stripping tool	Trimmer	Center contact positioner	Soldering jig	Cable positioner	Milling cutter	Lock jig	Torque wrench
R143 054 700 R143 228 700 R143 274 700 R143 322 700	3	R282 054 000	R282 074 010	R282 744 271	R282 740 000	R282 744 003	R282 915 020	R282 370 020	R282 321 020
Or tool box for TNC 18 for semi rigid cable R282 122 010									

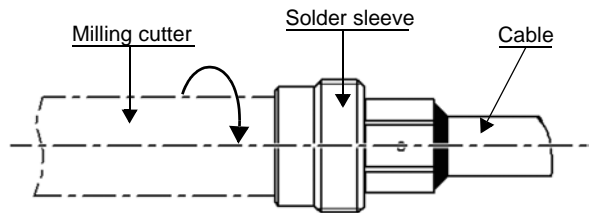
- 1**
- Strip the cable with the cable stripping tool.
 - Trim the cable inner conductor with the trimmer.
 - Clean the cable.
 - Screw the positioner onto the soldering jig.
 - Slide the cable assembly until it bottoms against positioner.
 - Tighten and solder the contact.



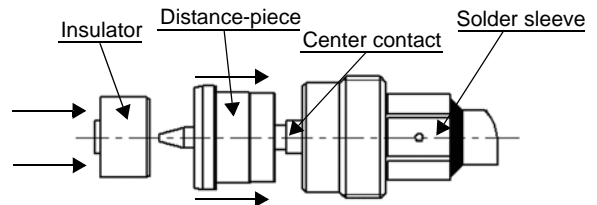
- 2**
- After cooling remove cable assembly from the jig.
 - Slide positioner into the solder sleeve.
 - Get in solder sleeve assembly onto the soldering jig and slide the cable until it bottoms against positioner.
 - Tighten.
 - Put 3 rings of solder around the cable and solder.



- 3**
- After cooling, remove the assembly from the jig.
 - Trim dielectric recess with the milling cutter.



- 4**
- Slide the distance-piece on the solder sleeve.
 - Slide insulator on the center contact.



- 5**
- Slide the connector on the sleeve and lock it.

